

# STANDARDS

DESIGNED IN ACCORDANCE WITH, AND FABRICATION TO MEET THE FOLLOWING STANDARDS:

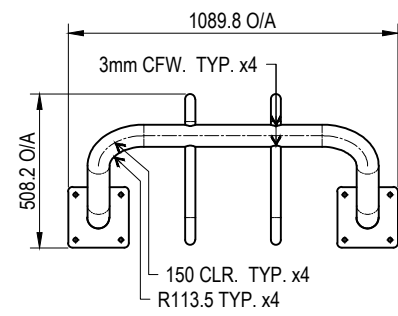
- AS1428.4.1:2009, TACTILE GROUND SURFACE INDICATORS FOR THE ORIENTATION OF PEOPLE WITH VISION IMPAIRMENT.
- AS1627.4 METAL FINISHING -PREPARATION AND PRE-TREATMENT OF SURFACES - ABRASIVE BLAST CLEANING OF STEEL.
- AS2312:2002/AMDT 1:2004, GUIDE TO PROTECTION OF IRON AND STEEL AGAINST EXTERIOR ATMOSPHERIC CORROSION, 1994.
- GUIDE TO ENGINEERING PRACTICE, 'PEDESTRIANS', PART 13, AUSTRROADS.
- AUSTRALIAN ROAD RULES , 1999, WWW.NRTC.GOV.AU
- AS4506-2005, METAL FINISHING-THERMOSET POWDER COATINGS.
- AS4680-2006, HOT DIP GALVANISING.
- AS1742.9-2000, MANUAL OF UNIFORM TRAFFIC CONTROL DEVICES, 'BICYCLE FACILITIES'.
- GUIDE TO ENGINEERING PRACTICE, 'BICYCLES', PART 14, AUSTRROADS.
- AUSTRALIAN ROAD RULES , 1999, WWW.NRTC.GOV.AU.
- AS2890.3-1993 PARKING FACILITIES PART 3
- AS 1742.9-2000 MANUAL OF UNIFORM TRAFFIC CONTROL DEVICES PART 9: BIKE FACILITIES.

# NOTES

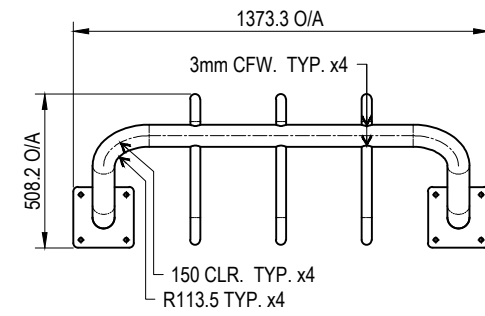
- WELDING TO BE ACCORDANCE TO AS1554.1 CAT GP WELDING, ALL SHARP EDGES & BURRS REMOVED.
- PART SHOULD BE SUPPLIED CLEAN AND FREE FROM MARKS, BURRS, SCUFFS, DISTORTION AND WARPAGE.
- ENSURE ANTI-SEIZE IS ON ALL NUTS AND BOLTS PRIOR TO ASSEMBLY.
- DRAWING TO AS1100 DRAWING STANDARDS.
- 316 S.S AND 316 S.S FASTENERS TO BE USED THROUGHOUT FOR COASTAL INSTALLATIONS OR ANY ENVIRONMENT WITH HIGH CORROSION.
- ALL TOLERANCES  $\pm 1.5\text{mm}$  UNLESS OTHERWISE SPECIFIED.

# MATERIAL

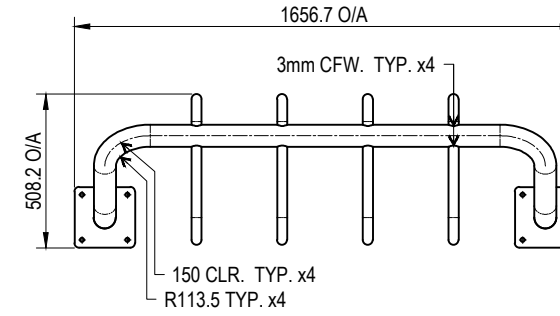
- MATERIAL: 316 STAINLESS STEEL.
- COLOUR: NATURAL.
- FINISH: 600 GRIT POLISHED/GARNET BLASTED.



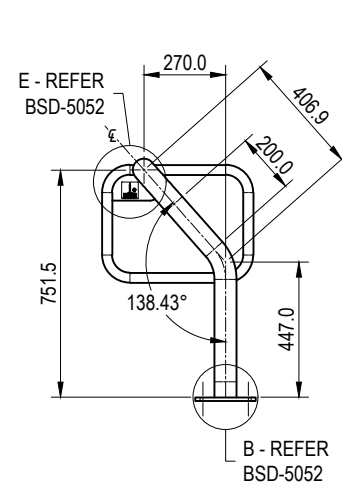
3 BAY BIKE RACK  
TOP VIEW



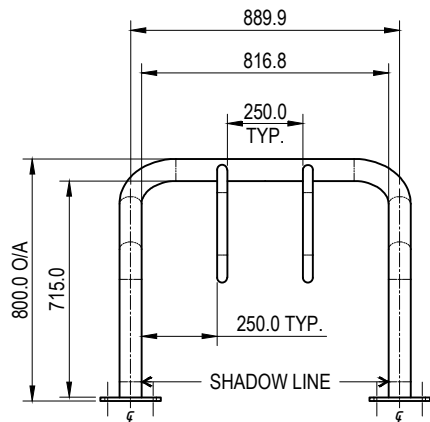
4 BAY BIKE RACK  
TOP VIEW



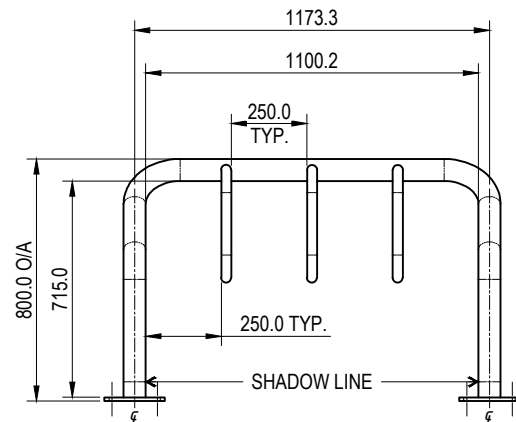
5 BAY BIKE RACK  
TOP VIEW



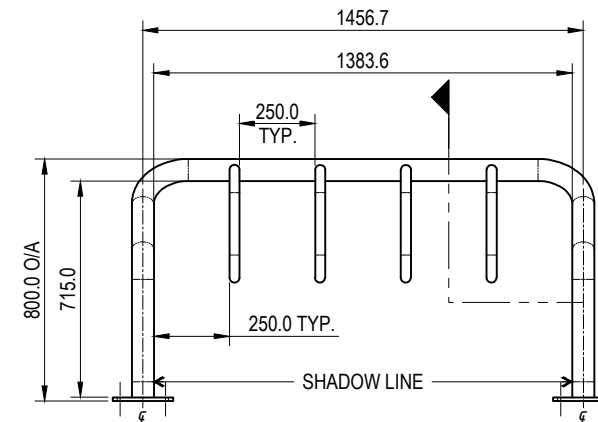
SIDE VIEW



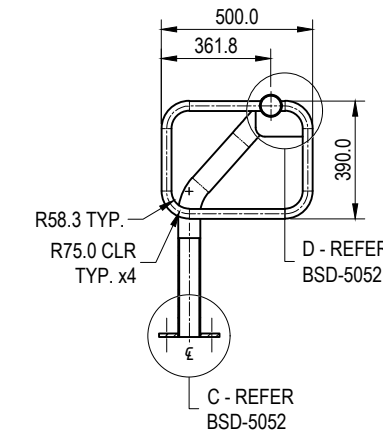
3 BAY BIKE RACK  
FRONT VIEW



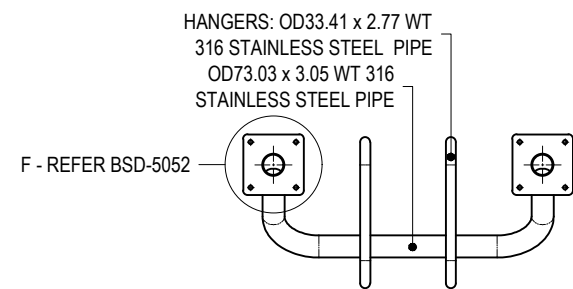
4 BAY BIKE RACK  
FRONT VIEW



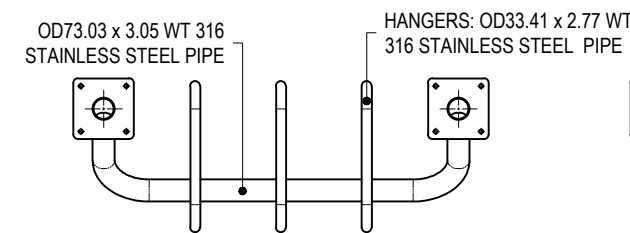
5 BAY BIKE RACK  
FRONT VIEW



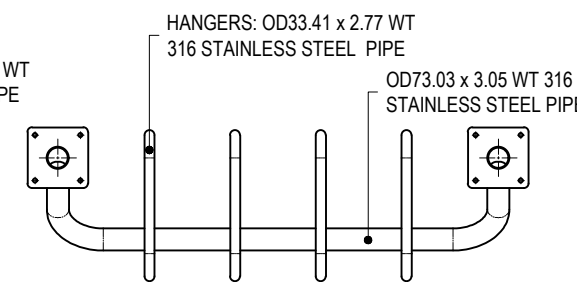
SECTION A-A



3 BAY BIKE RACK  
BOTTOM VIEW



4 BAY BIKE RACK  
BOTTOM VIEW



5 BAY BIKE RACK  
BOTTOM VIEW

ITEM NO.	DESCRIPTION	QTY.
1	3 BAY BIKE RACK	1
2	M10 304 STAINLESS STEEL WASHER	8
3	M10 304 STAINLESS STEEL DOME NUT	8

ITEM NO.	DESCRIPTION	QTY.
1	4 BAY BIKE RACK	1
2	M10 304 STAINLESS STEEL WASHER	8
3	M10 304 STAINLESS STEEL DOME NUT	8

ITEM NO.	DESCRIPTION	QTY.
1	5 BAY BIKE RACK	1
2	M10 304 STAINLESS STEEL WASHER	8
3	M10 304 STAINLESS STEEL DOME NUT	8

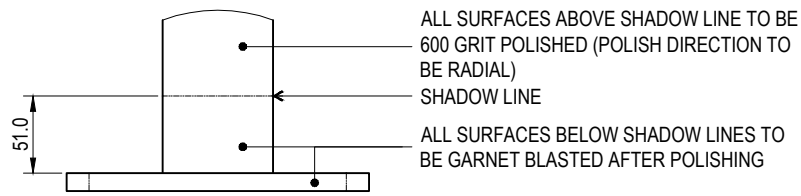
THE PURPOSE OF THIS STANDARD DRAWING IS TO PROVIDE TYPICAL DETAILS THAT SUPPORT THE DESIRED OUTCOMES OF THE BRISBANE CITY PLAN 2014 AND ASSOCIATED PLANNING SCHEME POLICIES. THE FITNESS FOR PURPOSE OF THIS STANDARD DRAWING FOR A SPECIFIC PROJECT SHOULD BE ASSESSED AND ACCEPTED BY AN APPROPRIATELY QUALIFIED DESIGNER AND/OR REGISTERED PROFESSIONAL ENGINEER OF QUEENSLAND (RPEQ).



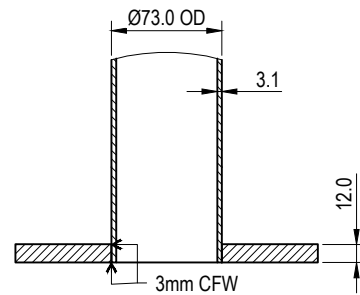
BRISBANE CITY COUNCIL STANDARD DRAWING

MULTI BIKE RACK  
SHEET 1 OF 3

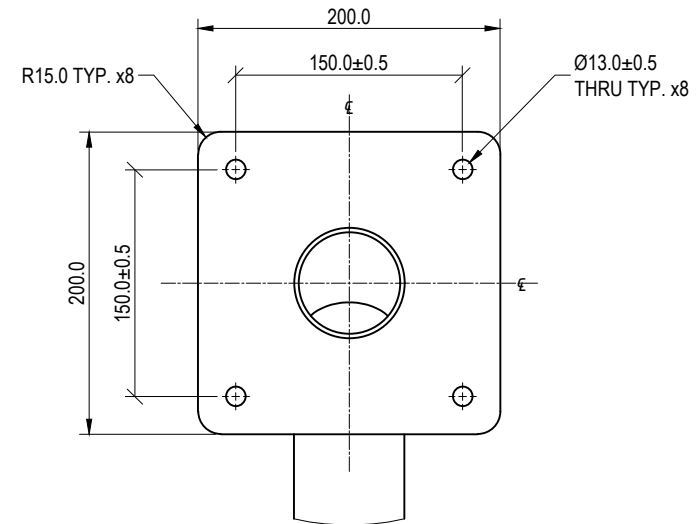
PUBLISH DATE		SEP 2024
SCALE		AS SHOWN
DRAWING NUMBER		BSD-5052
ORIGINAL SIZE	REVISION	
A3	C	



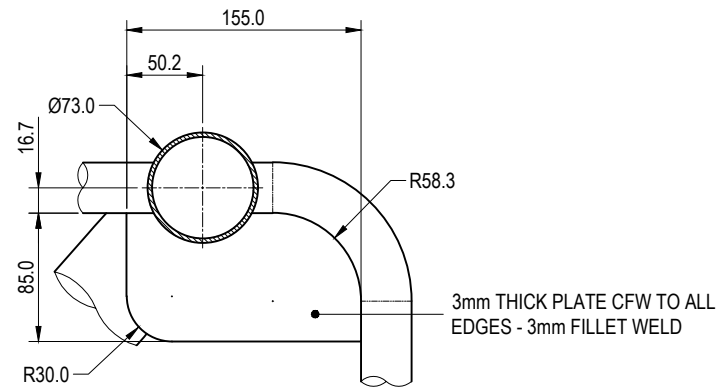
**DETAIL B**  
SURFACE FINISH DETAIL  
SCALE 1:5



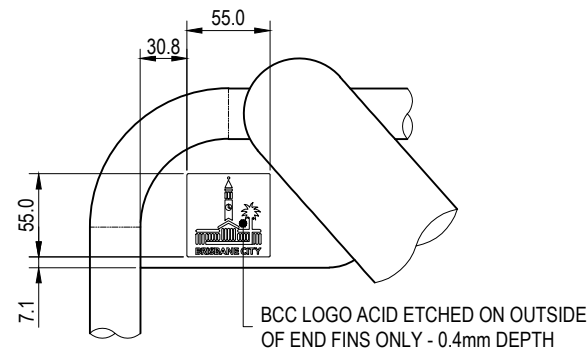
**DETAIL C**  
FOOT PLATE DETAIL  
SCALE 1:5



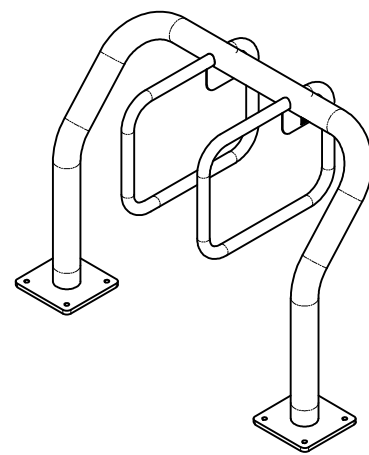
**DETAIL F**  
FOOT PLATE UNDERSIDE DETAIL  
SCALE 1:5



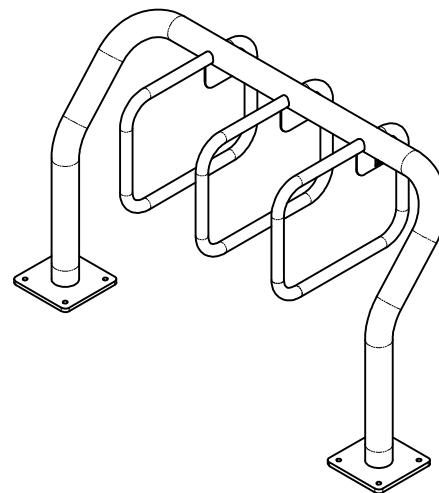
**DETAIL D**  
FIN PLATE DETAIL  
SCALE 1:5



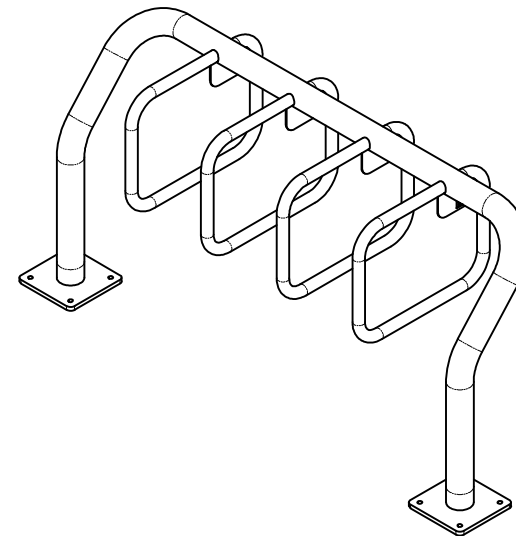
**DETAIL E**  
END FIN LOGO DETAIL  
SCALE 1:5



**3 BAY BIKE RACK**  
PICTORIAL VIEW



**4 BAY BIKE RACK**  
PICTORIAL VIEW



**5 BAY BIKE RACK**  
PICTORIAL VIEW

## STANDARDS

DESIGNED IN ACCORDANCE WITH, AND FABRICATION TO MEET THE FOLLOWING STANDARDS:

- AS1428.4.1:2009, TACTILE GROUND SURFACE INDICATORS FOR THE ORIENTATION OF PEOPLE WITH VISION IMPAIRMENT.
- AS1627.4 METAL FINISHING -PREPARATION AND PRE-TREATMENT OF SURFACES - ABRASIVE BLAST CLEANING OF STEEL.
- AS2312:2002/AMDT 1:2004, GUIDE TO PROTECTION OF IRON AND STEEL AGAINST EXTERIOR ATMOSPHERIC CORROSION, 1994.
- GUIDE TO ENGINEERING PRACTICE, 'PEDESTRIANS', PART 13, AUSTRROADS.
- AUSTRALIAN ROAD RULES , 1999, WWW.NRTC.GOV.AU
- AS4506-2005, METAL FINISHING-THERMOSET POWDER COATINGS.
- AS4680-2006, HOT DIP GALVANISING.
- AS1742.9-2000, MANUAL OF UNIFORM TRAFFIC CONTROL DEVICES, 'BICYCLE FACILITIES'.
- GUIDE TO ENGINEERING PRACTICE, 'BICYCLES', PART 14, AUSTRROADS.
- AUSTRALIAN ROAD RULES , 1999, WWW.NRTC.GOV.AU.
- AS2890.3-1993 PARKING FACILITIES PART 3
- AS 1742.9-2000 MANUAL OF UNIFORM TRAFFIC CONTROL DEVICES PART 9: BIKE FACILITIES

## NOTES

- WELDING TO BE ACCORDANCE TO AS1554.1 CAT GP WELDING, ALL SHARP EDGES & BURRS REMOVED.
- PART SHOULD BE SUPPLIED CLEAN AND FREE FROM MARKS, BURRS, SCUFFS, DISTORTION AND WARPAGE.
- ENSURE ANTI-SEIZE IS ON ALL NUTS AND BOLTS PRIOR TO ASSEMBLY.
- DRAWING TO AS1100 DRAWING STANDARDS.
- 316 S.S AND 316 S.S FASTENERS TO BE USED THROUGHOUT FOR COASTAL INSTALLATIONS OR ANY ENVIRONMENT WITH HIGH CORROSION.
- ALL TOLERANCES  $\pm 1.5\text{mm}$  UNLESS OTHERWISE SPECIFIED.

## MATERIAL

- MATERIAL: 316 STAINLESS STEEL.
- COLOUR: NATURAL.
- FINISH: 600 GRIT POLISHED/GARNET BLASTED.

THE PURPOSE OF THIS STANDARD DRAWING IS TO PROVIDE TYPICAL DETAILS THAT SUPPORT THE DESIRED OUTCOMES OF THE BRISBANE CITY PLAN 2014 AND ASSOCIATED PLANNING SCHEME POLICIES. THE FITNESS FOR PURPOSE OF THIS STANDARD DRAWING FOR A SPECIFIC PROJECT SHOULD BE ASSESSED AND ACCEPTED BY AN APPROPRIATELY QUALIFIED DESIGNER AND/OR REGISTERED PROFESSIONAL ENGINEER OF QUEENSLAND (RPEQ).



BRISBANE CITY COUNCIL STANDARD DRAWING

**MULTI BIKE RACK**  
DETAILS  
SHEET 2 OF 3

PUBLISH DATE		SEP 2024
SCALE		AS SHOWN
DRAWING NUMBER		<b>BSD-5052</b>
ORIGINAL SIZE	REVISION	
A3	C	

- M10 DOME NUT (304 STAINLESS STEEL)
- ENSURE SUFFICIENT CLEARANCE BETWEEN END OF EXPANSION BOLT THREAD AND INSIDE OF DOME NUT CAP PRIOR TO ASSEMBLY.
  - RECOMMENDED ASSEMBLY TORQUE FOR M10 DOME NUT = 17Nm (REF AS1111 PROPERTY CLASS 4.6 OR EQUIVALENT, COMMERCIAL LOW TENSILE BOLTS.).

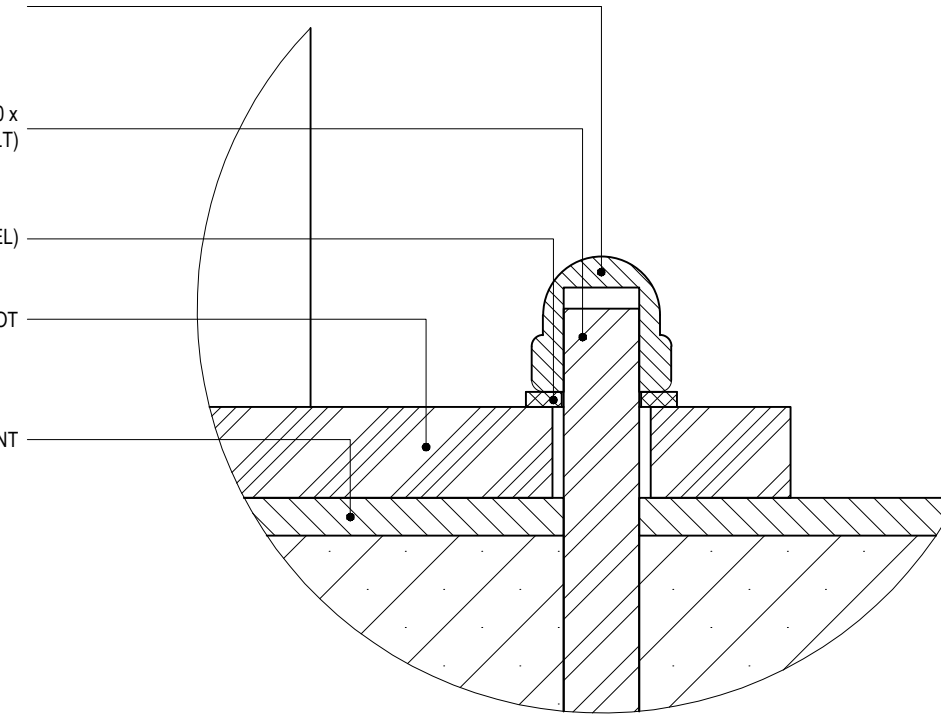
BOLT FIXED TO PAVEMENT (M10 x 150mm EXPANSION BOLT)

M10 WASHER (304 STAINLESS STEEL)

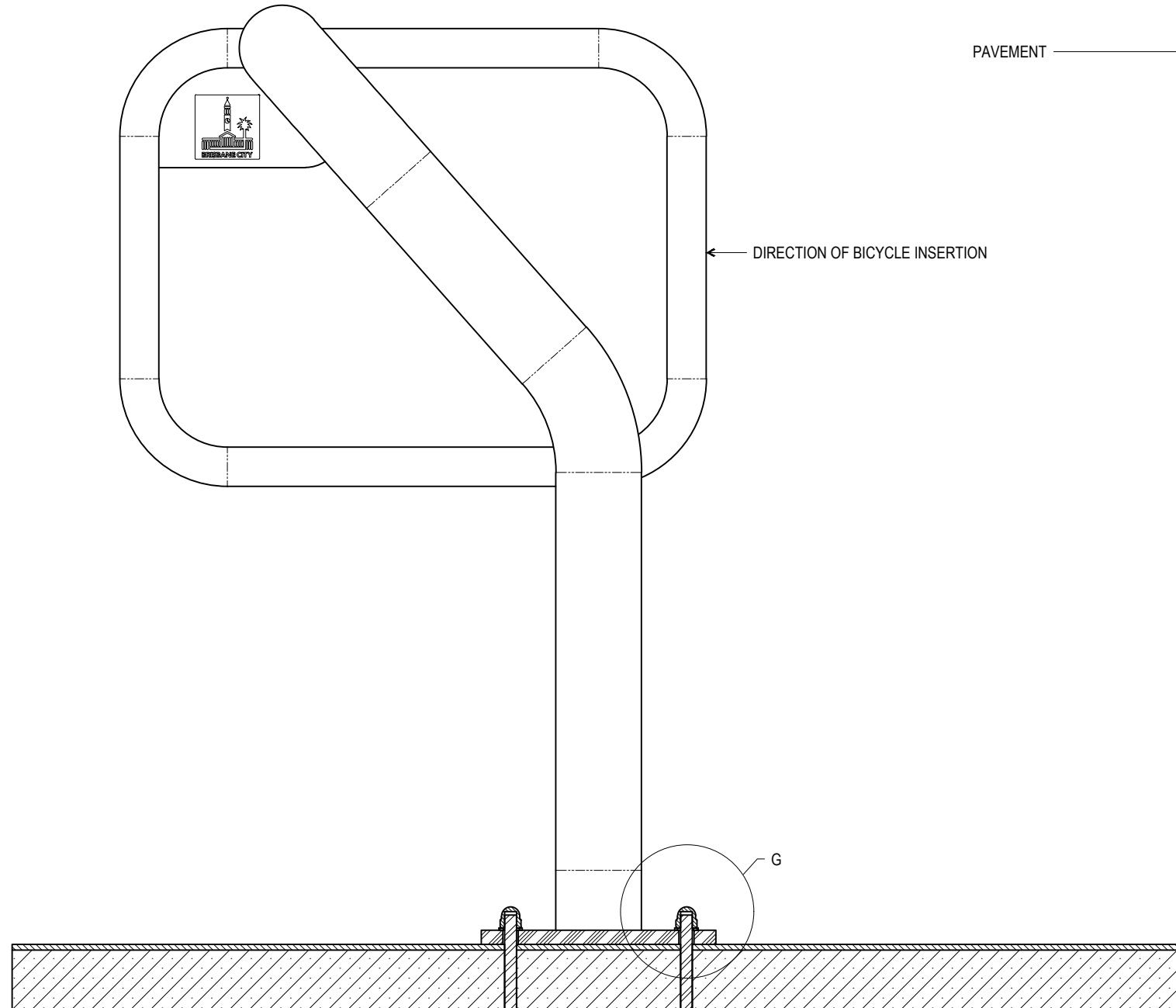
BIKE RACK FOOT

PAVEMENT

DIRECTION OF BICYCLE INSERTION



DETAIL G  
INSTALLATION DETAIL  
SCALE 1:1



SECTION VIEW OF INSTALLATION

## STANDARDS

DESIGNED IN ACCORDANCE WITH, AND FABRICATION TO MEET THE FOLLOWING STANDARDS:

1. AS1428.4.1:2009, TACTILE GROUND SURFACE INDICATORS FOR THE ORIENTATION OF PEOPLE WITH VISION IMPAIRMENT.
2. AS1627.4 METAL FINISHING -PREPARATION AND PRE-TREATMENT OF SURFACES - ABRASIVE BLAST CLEANING OF STEEL.
3. AS2312:2002/AMDT 1:2004, GUIDE TO PROTECTION OF IRON AND STEEL AGAINST EXTERIOR ATMOSPHERIC CORROSION, 1994.
4. GUIDE TO ENGINEERING PRACTICE, 'PEDESTRIANS', PART 13, AUSTRROADS.
5. AUSTRALIAN ROAD RULES , 1999, WWW.NRTC.GOV.AU
6. AS4506-2005, METAL FINISHING-THERMOSET POWDER COATINGS.
7. AS4680-2006, HOT DIP GALVANISING.
8. AS1742.9-2000, MANUAL OF UNIFORM TRAFFIC CONTROL DEVICES, 'BICYCLE FACILITIES'.
9. GUIDE TO ENGINEERING PRACTICE, 'BICYCLES', PART 14, AUSTRROADS.
10. AUSTRALIAN ROAD RULES , 1999, WWW.NRTC.GOV.AU.
11. AS2890.3-1993 PARKING FACILITIES PART 3
12. AS 1742.9-2000 MANUAL OF UNIFORM TRAFFIC CONTROL DEVICES PART 9: BIKE FACILITIES.

## NOTES

1. WELDING TO BE ACCORDANCE TO AS1554.1 CAT GP WELDING, ALL SHARP EDGES & BURRS REMOVED.
2. PART SHOULD BE SUPPLIED CLEAN AND FREE FROM MARKS, BURRS, SCUFFS, DISTORTION AND WARPAGE.
3. ENSURE ANTI-SEIZE IS ON ALL NUTS AND BOLTS PRIOR TO ASSEMBLY.
4. DRAWING TO AS1100 DRAWING STANDARDS.
5. 316 S.S AND 316 S.S FASTENERS TO BE USED THROUGHOUT FOR COASTAL INSTALLATIONS OR ANY ENVIRONMENT WITH HIGH CORROSION.
6. ALL TOLERANCES  $\pm 1.5\text{mm}$  UNLESS OTHERWISE SPECIFIED.

## MATERIAL

1. MATERIAL: SEE COMPONENT DRAWING.
2. COLOUR: SEE COMPONENT DRAWING.
3. FINISH: SEE COMPONENT DRAWING.

THE PURPOSE OF THIS STANDARD DRAWING IS TO PROVIDE TYPICAL DETAILS THAT SUPPORT THE DESIRED OUTCOMES OF THE BRISBANE CITY PLAN 2014 AND ASSOCIATED PLANNING SCHEME POLICIES. THE FITNESS FOR PURPOSE OF THIS STANDARD DRAWING FOR A SPECIFIC PROJECT SHOULD BE ASSESSED AND ACCEPTED BY AN APPROPRIATELY QUALIFIED DESIGNER AND/OR REGISTERED PROFESSIONAL ENGINEER OF QUEENSLAND (RPEQ).



BRISBANE CITY COUNCIL STANDARD DRAWING

MULTI BIKE RACK  
INSTALLATION  
SHEET 3 OF 3

PUBLISH DATE	SEP 2024
SCALE	AS SHOWN
DRAWING NUMBER	BSD-5052
ORIGINAL SIZE	A3
REVISION	C